

For use with Security+2.0 Garage Door Openers. The code between the the remote control and the receiver changes with each use, randomly accessing over a billion new codes. Refer to your product manual for the location of the learn button.

NOTE: Your product may look different than the products illustrated in this manual.

Single Button Remote Control
Model E940M



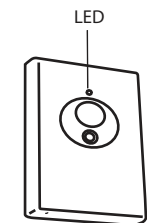
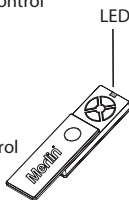
3-Button Remote Control
Model E943M



3-Button Mini Remote Control
Model E945M



4-Button Remote Control
Model E950M

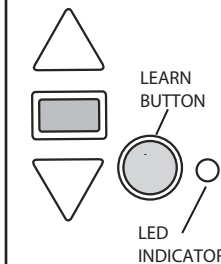


Wireless Wall Control
Model E128M

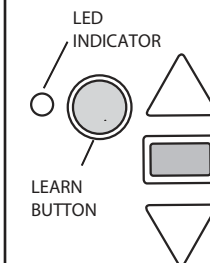


Wireless Wall Control
Model E138M

ROLLER DOOR OPENER



SECTIONAL DOOR OPENER

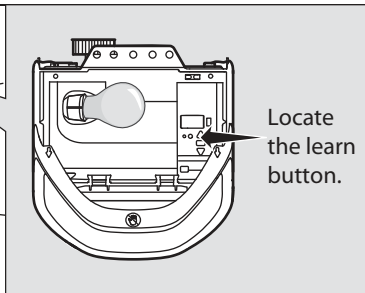
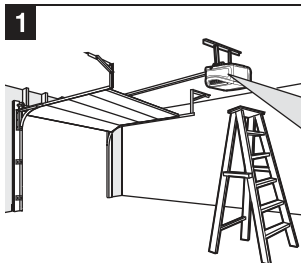


! WARNING

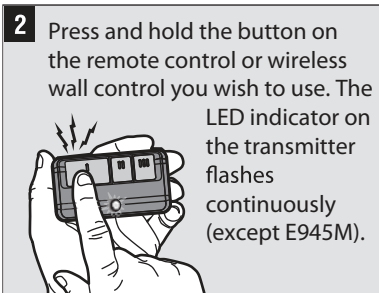
To prevent possible SERIOUS INJURY or DEATH from a moving gate or garage door:

- ALWAYS keep remote controls out of reach of children. NEVER permit children to operate, or play with remote controls.
- Activate gate or door ONLY when it can be seen clearly, is properly adjusted, and there are no obstructions to door travel.
- ALWAYS keep gate or garage door in sight until completely closed. NEVER permit anyone to cross path of moving gate or door.

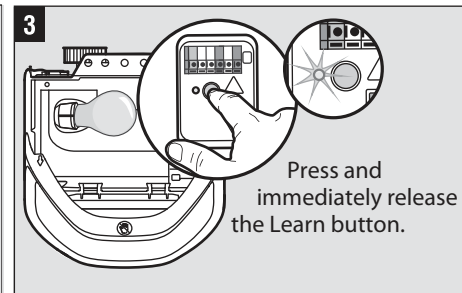
PROGRAM USING THE GARAGE DOOR OPENER



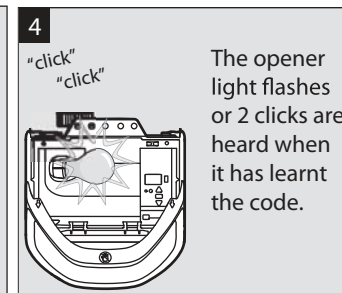
Locate
the learn
button.



2 Press and hold the button on the remote control or wireless wall control you wish to use. The LED indicator on the transmitter flashes continuously (except E945M).



Press and immediately release the Learn button.

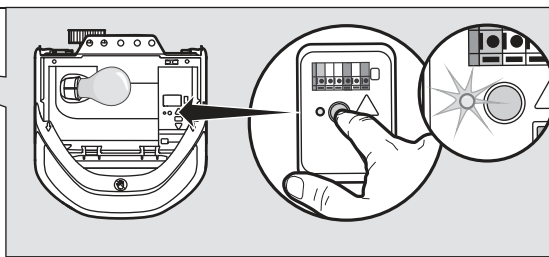
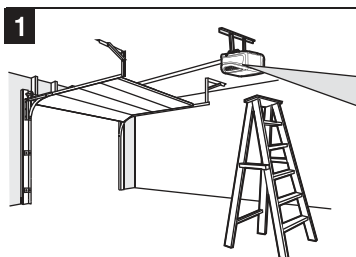


"click"
"click"

The opener light flashes or 2 clicks are heard when it has learnt the code.

TO ERASE ALL CODES FROM MEMORY

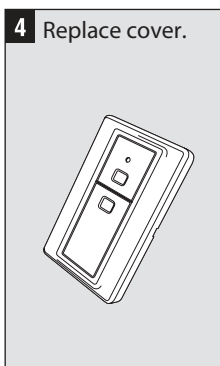
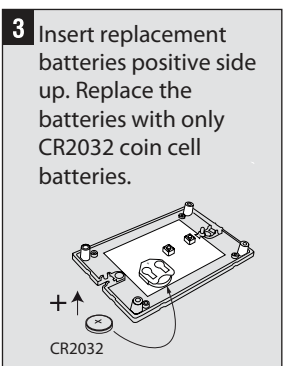
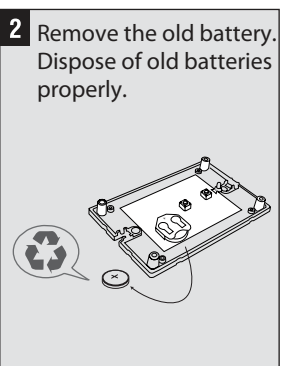
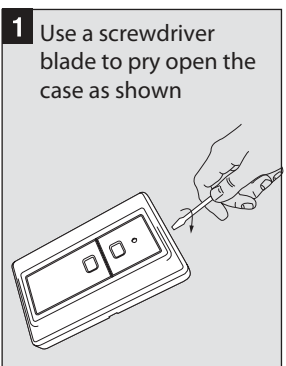
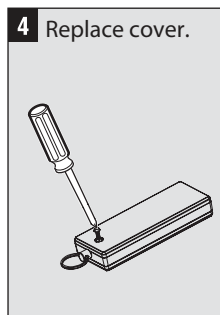
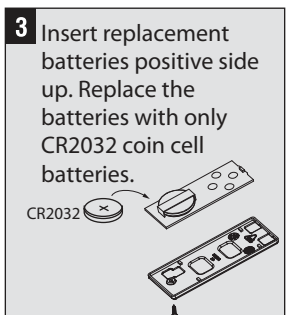
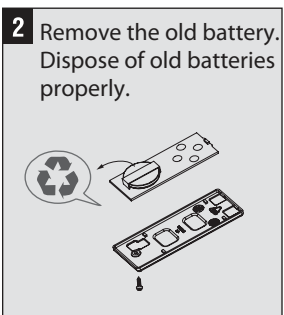
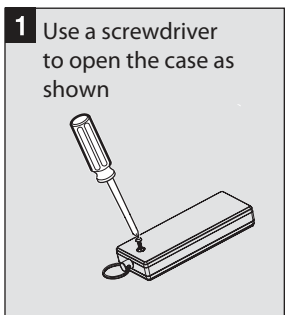
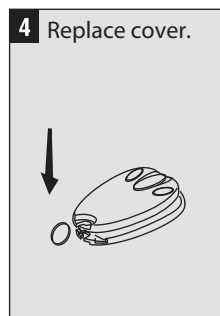
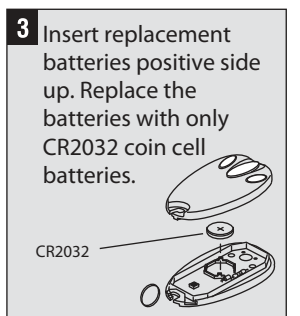
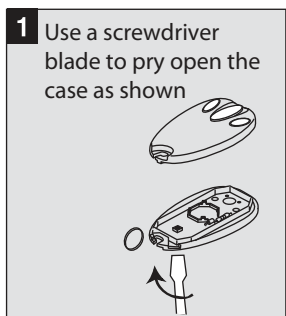
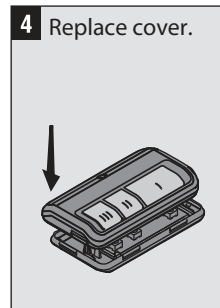
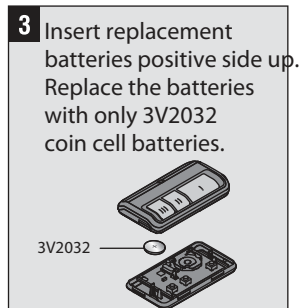
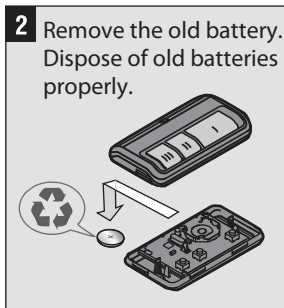
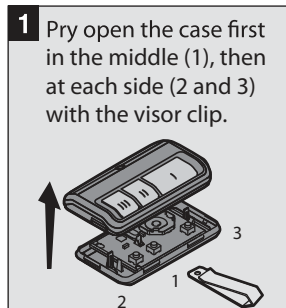
When deactivating any unwanted remote control code, all previous codes will be erased.



Press and hold the Learn button on garage door opener until the learn LED goes out (approximately 6 seconds). All previous codes are now erased. Reprogram each remote control you wish to use.

THE REMOTE CONTROL BATTERY

The lithium battery should produce power for up to 5 years. If the battery is low, the remote control's LED will not flash when the button is pressed. To replace battery:



! WARNING

To prevent possible **SERIOUS INJURY** or **DEATH**:

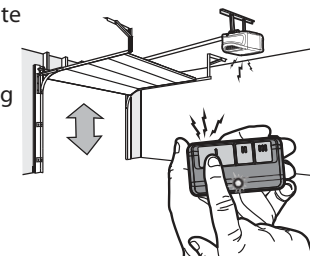
- NEVER allow small children near batteries.
- If battery is swallowed, immediately notify doctor.

To reduce risk of fire, explosion or chemical burn:

- Replace **ONLY** with 3V2032 coin batteries.
- **DO NOT** recharge, disassemble, heat above 212° F (100° C) or incinerate.

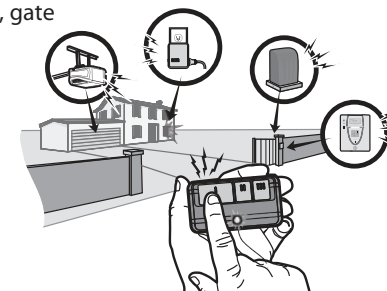
HOW TO USE THE REMOTE CONTROL

Press and hold the button down until the door or gate starts to move. The remote control will operate from up to 3 car lengths away on typical installations. Installations and conditions vary, contact an installing dealer for more information.



3-BUTTON REMOTE CONTROLS

Additional buttons on the remote control can be programmed to operate up to 3 devices such as additional garage door openers, light controls, gate operators or access control systems.



REPLACEMENT PARTS

CR2032 Lithium battery - CR2032
Visor Clip - 029B137

ONE YEAR LIMITED WARRANTY

The Chamberlain Group, Inc. warrants to the original consumer purchaser of this product that it is free from defect in materials and/or workmanship for a period of 1 year from the date of purchase.